

YOUNGSTOWN STATE UNIVERSITY



*Cliffe College
of Creative Arts*

2021 ALUMNI MAGAZINE EVENT CALENDAR



Spring

TABLE OF CONTENTS

Music 4-7

Visual & Dramatic Arts 8-11

Calendar 12-19



Phyllis

M. Paul, Ph.D.

DEAN AND PROFESSOR, CLIFFE COLLEGE

MESSAGE FROM THE DEAN

We hope your families and you are safe and well, and we're optimistic that 2021 will begin to bring relief from the coronavirus and its impact on our lives. Our fall semester was productive and included several virtual productions, exhibitions, performances, and guest artists, and the McDonough Museum of Art continued its innovative programming to launch an [Honors Recital Series](#). And yet, we were not quite ourselves. We didn't collide with each other backstage or enjoy an exhibition with family and friends. We didn't gather in the halls or squeeze past each other on our way in and out of a practice room. We sat far apart. We laughed with our eyes. We haven't experienced the reciprocal energy of a live audience since early last year. Even so, I am inspired by the way our faculty, staff, and students have ensured the continuity of our mission—to provide a dynamic learning environment that strengthens and broadens the intellectual and cultural horizons of our diverse community. As we anticipate moving forward from the challenges we have experienced during this pandemic, we will continue to evaluate changes we've made to our curriculum, performances, recruiting, and community engagement. No doubt, we will determine that some adjustments have added new important dimensions that we might never have embraced otherwise.

Conversely, we will likely find that some of our traditions are best maintained. We look forward to those discoveries and to becoming more ourselves than ever as we redouble our commitment to being an empathetic and caring community that helps our students pursue their artistic and professional goals.

Professor Greg Moring, who served as Associate Dean and editor of our *Alumni Magazine* for the past three years, retired at the end of December. Greg is a sculptor and was a faculty member at YSU for 24 ½ years. Prior to joining the dean's office staff, he served as Chair of the Department of Art for 8 years. Greg has been an invaluable member of our College; we are indebted to him for his many contributions as a faculty member and administrator, and he will continue to be engaged in various College and university endeavors.

Professor Joy Christiansen Erb has been appointed as Special Assistant to the Dean. Joy is a photographer, and as many of you likely know from our previous *Magazines*, she served as Chair of the Department of Art for 3 ½ years. She has been a faculty member at YSU for 12 ½ years, and we are looking forward to working with her in her new position.

As the College continues to implement actions to meet the mission of the university's new Strategic Plan, we have shifted departmental organization again. At the beginning of this semester, the Departments of Art and Theatre & Dance joined to become the Department of

Visual and Dramatic Arts. We are excited about the possibilities for synergies that this new configuration creates and believe they will yield innovative programmatic, co-curricular, and professional endeavors for our students and community. Dr. Stephanie Smith, who was Acting Co-Director of the former School of Performing Arts, is now the Acting Chair of the new department. The Dana School of Music is a stand-alone department in the College.

As always, we remain grateful for your generosity and support. We hope you enjoy this issue of our *Alumni Magazine* as you read about the comings and goings of our Cliffe College family. To provide news for this *Magazine*, find out more information, or to contribute to the "[We See Tomorrow](#)" campaign, please e-mail us at CliffeCollege@ysu.edu or call 330.941.3625. Our sincere thanks to Associate Dean Greg Moring for his dedicated work as editor and producer of our *Alumni Magazine* and *Events Calendar*. All of us in Cliffe College send our warmest wishes for a brighter 2021 and the safety and continued well-being of your friends and family.

Warmest regards,



Phyllis M. Paul, Ph.D.
Dean and Professor





Randall


GOLDBERG, Ph.D.

DANA SCHOOL OF MUSIC, ACTING DIRECTOR

MESSAGE FROM THE DANA SCHOOL OF MUSIC ACTING DIRECTOR

Greetings from Bliss Hall! I sincerely hope this letter finds you in good health and spirit. The fall semester brought many challenges to Dana School of Music students and faculty but also many opportunities. Although most of our live concert schedule was canceled, we created two new recital series in conjunction with YSU's McDonough Museum of Art: The Dana Alumni Recital Series featured recent graduates of Dana and the Department of Theatre & Dance performing concerts of jazz, classical, and Celtic music. The Dana Honors Recital Series included standout concerts by six exceptional Dana School of Music students. Concerts from both series may be viewed by visiting the [McDonough Museum YouTube](#) channel.

To create space in our facilities for applied lessons and modified ensembles, most academic classes moved online. The challenges



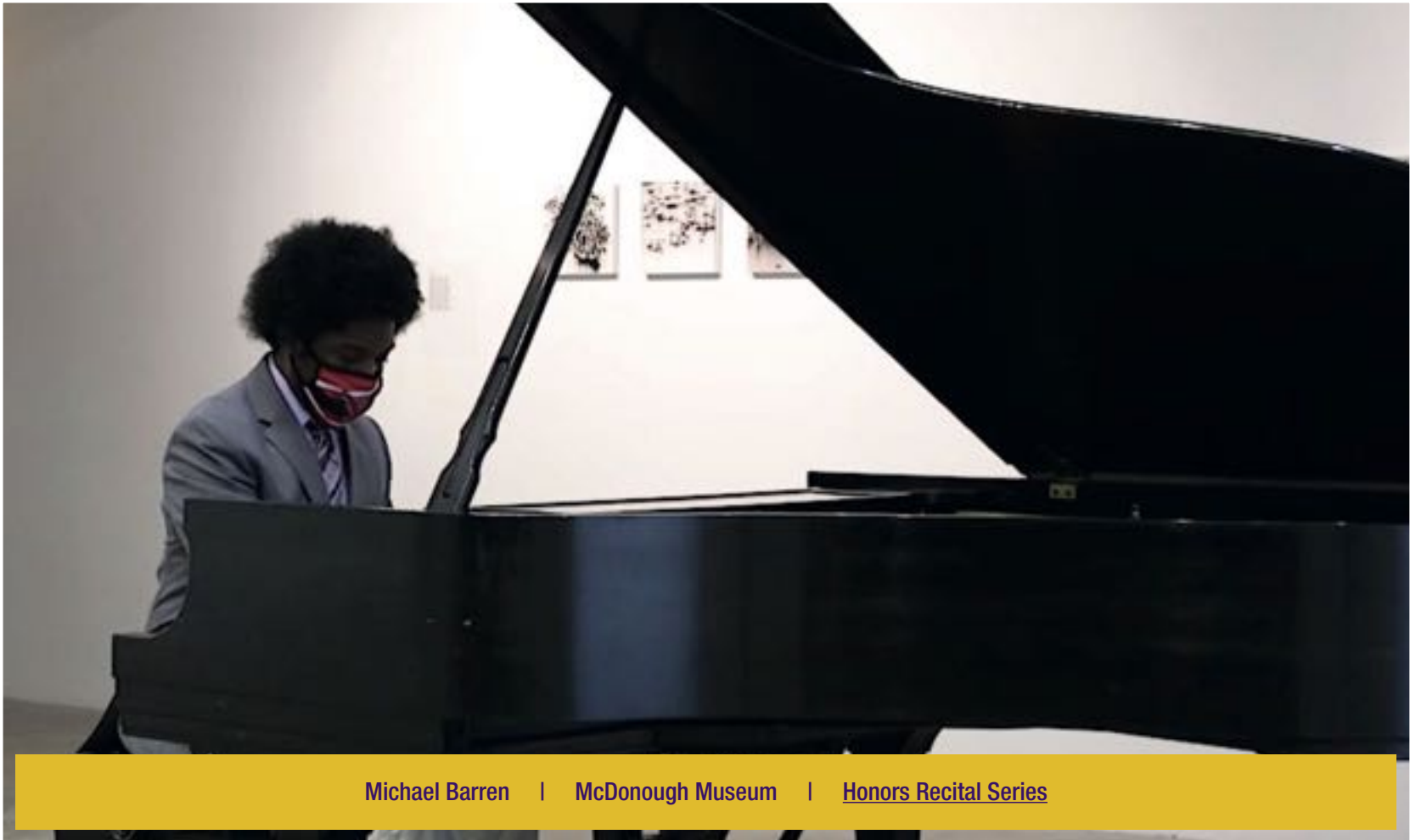
of virtual class meetings inspired Dana faculty member **Dr. Ewelina Boczkowska** to innovate and experiment with her classroom delivery. By scheduling a series of visitors, Dr. Boczkowska gave her students the opportunity to see inside the studios of performers and visual artists and the work spaces of historians to better understand the life of working professionals. Guests included Cleveland-based vocalist Amanda Powell discussing the creation of her recent album *Beyond Boundaries*; SUNY Buffalo Professor of Historical Musicology Stephanie Vander Wel offered graduate students cutting-edge research on Jimi Hendrix's and Janis Joplin's performances at the 1976 Monterey Pop Festival; and YSU Associate Professor of Interdisciplinary Digital Media **Dana Sperry** presented on the Fluxus movement.

Concerns about COVID infections limited face-to-face rehearsals and performances by Dana choral ensembles, but the Dana Chorale and Voices of YSU were able to share their music across the globe. Dana Director of Choral Activities, **Dr. Hae-Jong Lee**, and the

Dana Chorale collaborated with the Busan Teachers' Choir (S. Korea) to create a virtual performance of Elaine Hilgenberg's setting of the traditional Irish blessing ***You Do Not Walk Alone***. The performance, which was edited by Dana PTF of Music Industry Jack Ciarniello, was premiered live at the 2020 Busan Virtual Choir Festival and Competition along with vocal groups from Spain, Venezuela, Malaysia, the Philippines, and other nations. Dana Associate Professor of Music Education, **Dr. Daniel Keown**, and the Voices of YSU continued their year-long series of virtual contributions with an uplifting performance of ***Rise Up*** by Cassandra Batie and Jennifer Decilveo. The video features vocal soloists and several of Dana's top instrumentalists and, as with other Voices of YSU videos, will be featured at upcoming virtual University events.



You Do Not Walk Alone (Elaine Hilgenberg's) | Dana Chorale & Busan Teachers' Choir (S. Korea) | Dr. Hae-Jong Lee, Conductor



Michael Barren | McDonough Museum | [Honors Recital Series](#)



Stephanie


SMITH, Ph.D.

DEPARTMENT OF VISUAL & DRAMATIC ARTS, ACTING CHAIR

MESSAGE FROM THE DEPARTMENT OF VISUAL & DRAMATIC ARTS ACTING CHAIR

I am honored to be serving as the Acting Chair of the newly formed Department of Visual & Dramatic Arts. This exciting development brings together over 300 students and creates some exciting collaborative opportunities.

We are so proud to announce exciting art, theatre, and dance programming planned for YSU's spring semester. The challenges of 2020 brought out the best in YSU's creative and performing arts programs and resulted in a novel and extremely successful lectures, exhibitions, and performances. University Theatre's transition to virtual productions, presented as scheduled content through our partner platform, ShowTix4U, allowed our patrons to experience



high quality theatre from the comfort and safety of their own home. While our performers and production team made the work look easy, no one can underestimate the collaboration, innovation, and determination that was necessary to bring the season to fruition. We learned a great deal and are excited to be able to continue offering robust production opportunities for our students under the expert supervision of our faculty and staff. The spring season promises to be equally successful, and our production teams are fully engaged in bringing exciting content to the virtual stage. Our mainstage season, available through ShowTix4U, includes our dance concert, *Now You See Us ... An Evening of Virtual Dance*, featuring choreography by YSU dance faculty, running March 25th through the 27th and *An Evening with Billy Shakes*, a selection of Shakespeare scenes and monologues, running April 9th through the 18th. We are also pleased to be able to share, free of charge through [YouTube](#), *Welcome Spring!*, a cabaret-style celebration of Earth Day, on April 23rd.

The [McDonough Museum of Art](#) has a series of exhibitions, film screenings, and lectures planned through the spring semester including the work of installation artist Zac Benson, photographer Amy Theiss Giese, Akron-based painter Max Markwald, and Youngstown-based artist James Sean Crum. Each of the artists will also be giving a free virtual lecture based on their work. Our students will also take to the galleries in both the McDonough Museum of Art and our Judith Rae Solomon Gallery. There are too many events and exhibitions to list here so please take a look at the color-coded Cliffe Book [Calendar of Events](#).

Thank you to all of our visitors and patrons for your continued support of the visual and performing arts at YSU. We may look different this year but we are still here and we are excited to continue to bring quality cultural offerings to the valley.



Cast of Elegies:
A Song Cycle (William Finn)



Andrews Avenue Memory Mural Project — Designed and Painted by Students
Mural and Site-Specific Painting Class (Professor Dragana Crnjak)

SPRING 2021 CLIFFE COLLEGE EVENTS

 Cliffe College Facebook

 Cliffe College Instagram

 Cliffe College YouTube

 McDonough Museum of Art Facebook

 McDonough Museum of Art Instagram

 McDonough Museum of Art YouTube

Music

Visual & Dramatic Arts

Pipino Performing Arts Series

January

Northeast Ohio Scholastic Art Exhibition Monday, January 11-27

Judith Rae Solomon Gallery | Bliss Hall

The Northeast Ohio Scholastic Awards Exhibition showcases artwork from students in Mahoning, Trumbull, Columbiana, and Ashtabula Counties in grades 7-12. This exhibition will be featured in a one-wall exhibition and available to be viewed from the outside of the glass gallery doors.

Department of Art *84th Annual Juried Student Art & Design Exhibition* Friday, January 22 – February 5

McDonough Museum of Art

The annual juried exhibition of work by students currently enrolled in the Department of Art at YSU.

Dana Audition Day Saturday, January 23 | 10:00 AM

Join faculty of the Dana School of Music for a virtual audition day. For more information, visit the [Dana Admissions Page](#).

Pipino Performing Arts Series: Vijay Iyer

Jazz pianist, composer and MacArthur Foundation "Genius" Fellow

Wednesday, January 27 | 7:00 PM

Available Live at [Pipino Performing Arts Series](#) or on the [Cliffe College YouTube](#) channel.

Piano and Jazz Masterclass: Vijay Iyer

Jazz pianist, composer and MacArthur Foundation "Genius" Fellow

Friday, January 29 | 2:00 PM | Live

Access live via the [Dana School](#) website.

McDonough Museum Honors Recital Series: Olivia Benna, flute

Saturday, January 30 | 7:00 PM | Premiere

Pre-recorded for viewing on [Cliffe College YouTube](#) and [McDonough YouTube](#) channels.

Recitals by standout Dana School of Music students selected by a faculty committee.

February

Sculpture Student Exhibition

Organized by Lauren Baker and Tony Armeni

Monday, February 1-12

Judith Rae Solomon Gallery | Bliss Hall

This exhibition will feature student work in a one-wall exhibition and be available for viewing from the outside of the glass gallery doors.



Foreigner's Home Film Screening

Wednesday, February 3 | Noon

McDonough Museum of Art Lecture Hall

In-person at the McDonough Museum of Art Lecture Hall. Capacity is 24; Masks required.

McDonough Museum Honors Recital Series: Lauren Faber, soprano

Saturday, February 6 | 7:00 PM | Premiere

Pre-recorded for viewing on [Cliffe College YouTube](#) and [McDonough YouTube](#) channels.

Recitals by standout Dana School of Music students selected by a faculty committee.

Department of Art Virtual Information Session: Art Education

Monday, February 8 | 6:00 PM

[Registration here.](#)

Foreigner's Home Film Screening

Wednesday, February 10 | Noon

McDonough Museum of Art Lecture Hall

In-person at the McDonough Museum of Art Lecture Hall. Capacity is 24; Masks required.

McDonough Museum Muse Series: Kivie Cahn-Lipman, cello

Saturday, February 13 | 7:00 PM | Premiere

Pre-recorded for viewing on [Cliffe College YouTube](#) and [McDonough YouTube](#) channels.



Foreigner's Home Film Screening

Wednesday, February 17 | Noon

McDonough Museum of Art Lecture Hall

In-person at the McDonough Museum of Art Lecture Hall. Capacity is 24; Masks required.

Dana Audition Day

Saturday, February 20 | 10:00 AM

Join faculty of the Dana School of Music for a virtual audition day. Pre-registration is required.

[Pre-registration here.](#)

McDonough Museum Honors Recital Series: Mckenzie Cooper, flute and piccolo

Saturday, February 20 | 7:00 PM | Premiere

Pre-recorded for viewing on [Cliffe College YouTube](#) and [McDonough YouTube](#) channels.

Recitals by standout Dana School of Music students selected by a faculty committee.

Lindsey French, Beecher Art & Technology Lecture Series

Monday, February 22 | 1:00 PM

[View here.](#) Password: art2021

Lindsey French is an artist and educator whose work engages in gestures of sensual and mediated communication with landscapes and the non-human. She has shared her work in places such as the Museum of Contemporary Art (Chicago) and the International Museum of Surgical Science (Chicago), Pratt Manhattan Gallery (New York), and in conjunction with the International Symposium of Electronics Arts (Albuquerque and Vancouver). She currently teaches as a Visiting Assistant Professor in the Department of Studio Arts at the University of Pittsburgh.

Foreigner's Home Film Screening

Wednesday, February 24 | Noon

McDonough Museum of Art Lecture Hall

In-person at the McDonough Museum of Art Lecture Hall. Capacity is 24; Masks required.

Composition Masterclass: Du Yun

Pulitzer Prize-winner, composer, performer, advocator

Wednesday, February 24 | 4:00 PM | Live

Access live via the [Dana School](#) website.

Pipino Performing Arts Series: Du Yun

Pulitzer Prize-winner, composer, performer, advocator

Wednesday, February 24 | 7:00 PM

Available Live at [Pipino Performing Arts Series](#) or on the [Cliffe College YouTube](#) channel.



SPRING 2021 CLIFFE COLLEGE EVENTS

 Cliffe College Facebook

 Cliffe College Instagram

 Cliffe College YouTube

 McDonough Museum of Art Facebook

 McDonough Museum of Art Instagram

 McDonough Museum of Art YouTube

Music

Visual & Dramatic Arts

Pipino Performing Arts Series

February

Amy Theiss Giese

The Absence of Light Within These Walls

Friday, February 26 – April 2

McDonough Museum of Art

The large-scale, unique, silver gelatin skiagrams (Greek for “shadows written”) are a direct recording of the shadow patterns in a room at night. They are created without a camera or an aperture. The project is an exploration of how the inherent properties of darkroom paper capture and hold elements of a specific time, place, and moment. Ultimately, the skiagrams are a play between light and dark, tangible and abstract, a physical object and the ephemerality of a moment.

Zac Benson

Realizations

Friday, February 26 – April 2

McDonough Museum of Art

Benson navigates current happenings, personal beliefs, and anthropological perspectives. He toils over aspects of life and society that are concerning, meaningful, or just overwhelming. His work is the conduit through which he raises awareness and evokes empathy towards people and happenings.

James Shawn Crum

*Our Blood-soaked Land Is Haunted
by My Muses*

Friday, February 26 – April 2

McDonough Museum of Art

Our 2021 Emerging Visual Artist, James Shawn Crum explores the very real possibility that as a gay black male, he exists within several realities. Painting allows him to regroup and reconcile the conflicts that ensue. His art practice is a refuge, a cosmic exhale, and a record of existence. The creative urge frees him from anger, transforming it into effort.

McDonough Museum Scribe Series:

Max Markwald *Skin*

Friday, February 26 – April 2

McDonough Museum of Art

In his oil paintings, Markwald uses figurative realism to highlight queer voices and document his gender transition. In his upcoming exhibition, “Skin,” Markwald often fragments the human form, creating obscured portraits that seem to be hiding in full view.

As part of the ***Scribe*** literary collaborative, this exhibition will be accompanied by journals created by YSU students and community members. The booklets will contain written and visual art inspired by themes presented in the artist’s work.

Dana Audition Day

Saturday, February 27 | 10:00 AM

Join faculty of the Dana School of Music for a virtual audition day. Pre-registration is required. [Pre-registration here.](#)

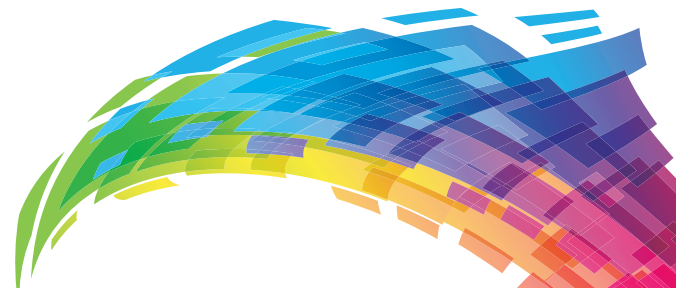
McDonough Museum Honors Recital Series:

Sierra McCorvey, soprano

Saturday, February 27 | 7:00 PM | Premiere

Pre-recorded for viewing on [Cliffe College YouTube](#) and [McDonough YouTube](#) channels.

Recital by standout Dana School of Music students selected by a faculty committee.





March

Amze Emmons, Department of Art Lecture Series and Red Press Artist

Monday, March 1 | 10am

[View here.](#) Password: art2021

Amze Emmons is a Philadelphia-based, multi-disciplinary artist with a background in drawing and printmaking. His images evoke a sense of magical/minimal realism inspired by architectural illustration, comic books, cartoon language, information graphics, news footage, consumer packaging, and instruction manuals. He is currently an Associate Professor at Tyler School of Art at Temple University in Philadelphia. Emmons is also a co-founder of the popular art group, [Printeresting.org](#).

Small But Mighty Painting Exhibit

Organized by Dragana Crnjak

Monday, March 1-26

Judith Rae Solomon Gallery | Bliss Hall

This exhibition will feature student work in a one-wall exhibition and be available for viewing from the outside of the glass gallery doors.

James Shawn Crum, Artist Lecture

Monday, March 1 | 6:00 PM

[View on the McDonough YouTube channel.](#)

Pipino Performing Arts Series: Anthony Ross Costanzo

Countertenor, Headlining Metropolitan Opera Soloist and Musical America's 2019 Vocalist of the Year

Wednesday, March 3 | 7:00 PM

Available Live at [Pipino Performing Arts Series](#) or on the [Cliffe College YouTube](#) channel.

Vocal Masterclass: Anthony Roth Costanzo

Countertenor, Headlining Metropolitan Opera Soloist and Musical America's 2019 Vocalist of the Year

Thursday, March 4 | 4:00 PM | Live

Available Live at [Pipino Performing Arts Series](#) or on the [Cliffe College YouTube](#) channel.

Dana Alumni Recital Series: Jeffrey Williams (MM '20), singer/songwriter

Saturday, March 6 | 7:00 PM | Premiere

Pre-recorded for viewing on [Cliffe College YouTube](#) and [McDonough YouTube](#) channels.



SPRING 2021 CLIFFE COLLEGE EVENTS

 Cliffe College Facebook

 Cliffe College Instagram

 Cliffe College YouTube

 McDonough Museum of Art Facebook

 McDonough Museum of Art Instagram

 McDonough Museum of Art YouTube

Music

Visual & Dramatic Arts

Pipino Performing Arts Series

March

Eddo Stern, Beecher Art & Technology Lecture Series Monday, March 8 | 5:30 PM

[View here.](#) Password: art2021

Eddo Stern works on the disputed borderlands between fantasy and reality, exploring the uneasy and otherwise unconscious connections between physical existence and electronic simulation. His work explores new modes of narrative and documentary, experimental computer game design, fantasies of technology and history, and cross-cultural representation in computer games, film, and online media. He works in various media including computer software, hardware and game design, kinetic sculpture, performance, and film and video production. He is currently a professor in the Department of Design Media Arts and Director of the Game Lab at UCLA.

Amy Theiss Giese, Artist Lecture Wednesday, March 10 | 10:00 AM

View on Zoom via a link posted on the [McDonough website](#) and social media pages.

McDonough Museum Muse Series: Dana Piano Trio

Featuring Kivie Cahn-Lipman, cello; Wendy Case, violin; Cicilia Yudha, piano, performing Franz Schubert's Trio in Eb Major (D929) and Adam Schoenberg's *Luna y mar*

Saturday, March 20 | 7:00 PM | Premiere

Pre-recorded for viewing on [Cliffe College YouTube](#) and [McDonough YouTube](#) channels.



Max Markwald, Artist Lecture Tuesday, March 16 | 12:30 PM

View on the [McDonough YouTube](#) channel.

Department of Art Virtual Information Session: Interdisciplinary Studio Art Tuesday, March 16 | 6:00 PM

[Register here.](#)

Dana Alumni Recital Series: Christopher Mrofchak (BM '16), guitar Tuesday, March 20 | 7:00 PM

View on [Cliffe College YouTube](#) and [McDonough YouTube](#) channels.

Zac Benson, Artist Lecture Tuesday, March 23 | 9:00 AM

View on the [McDonough YouTube](#) channel.

University Theatre: *Now You See Us...
An Evening of Virtual Dance*

Thursday, March 25-27

Thursday, March 25 | 7:30 PM

Friday, March 26 | 7:30 PM

Saturday, March 27 | 2:00 PM and 7:30 PM

Tickets are available at [here](#).

YSU dance majors perform original work choreographed by Dance Program faculty.



Paintings by Emily Goerig

Monday, April 5-9

Judith Rae Solomon Gallery | Bliss Hall



University Theatre:

An Evening with Billy Shakes

Friday, April 9-18

Friday, April 9 | 7:30 PM

Saturday, April 10 | 2:00 PM and 7:30 PM

Sunday, April 11 | 2:00 PM and 7:30 PM

Friday, April 16 | 7:30 PM

Saturday, April 17 | 2:00 PM and 7:30 PM

Sunday, April 18 | 2:00 PM and 7:30 PM

Tickets are available at [here](#).

A selection of scenes and monologues, curated from the works of William Shakespeare, will showcase our students' versatility and breadth with selections spanning the comic to the tragic.

Dana Fiddle Day: Tracy Silverman, electric violin; Caitlin Hedge, Celtic violin; Steven Greenman, klezmer violin

Saturday, April 10 | 1:00 - 5:00 PM | Live

Free with registration. Registration form can be found [here](#).

McDonough Museum Honors Recital Series: Bruce Deal, tuba

Saturday, April 10 | 7:00 PM | Premiere

Pre-recorded for viewing on [Cliffe College YouTube](#) and [McDonough YouTube](#) channels.

Recitals by standout Dana School of Music students selected by a faculty committee.



SPRING 2021

CLIFFE COLLEGE EVENTS

 [Cliffe College Facebook](#)

 [Cliffe College Instagram](#)

 [Cliffe College YouTube](#)

 [McDonough Museum of Art Facebook](#)

 [McDonough Museum of Art Instagram](#)

 [McDonough Museum of Art YouTube](#)

Music

Visual & Dramatic Arts

Pipino Performing Arts Series

April

Chris Sickels, Department of Art Lecture Series

Monday, April 12 | 5:30 PM

View [here](#).

Chris Sickels grew up on a small family farm where working hard was the only option and things had to be fixed with what was on hand. Now he creates 3D illustration and stop-motion animation with what is at arms-reach in his studio. Sickels' illustrations and animations have been recognized by American Illustration, Communication Arts, and HOW. The stop-motion animated films have screened at various festivals including Los Angeles International Short Film Festival and Montreal Stop-Motion Film Festival.

Department of Art Virtual Information Session: Sculpture and Ceramics

Tuesday, April 13 | 6:00 PM

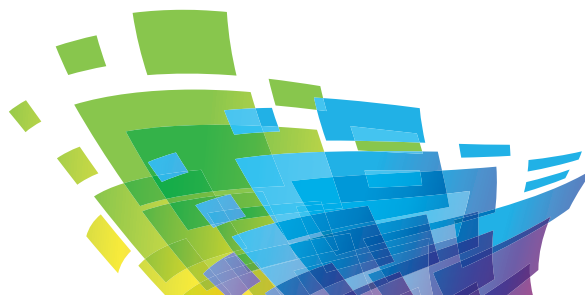
Register [here](#).

Percussion and Jazz Masterclass: Tyshawn Sorey

Multi-instrumentalist, composer and MacArthur Foundation "Genius" Fellow

Wednesday, April 14 | 5:30 PM | Live

Available Live at [Pipino Performing Arts Series](#) or on the [Cliffe College YouTube](#) channel.



Pipino Performing Arts Series: Tyshawn Sorey

Multi-instrumentalist, composer and MacArthur Foundation "Genius" Fellow

Wednesday, April 14 | 7:00 PM | Live

Available Live at [Pipino Performing Arts Series](#) or on the [Cliffe College YouTube](#) channel.

Dana Alumni Recital Series: Tria Corazón

Featuring Anna Reitsma, flute (MM'18); Elliot Kwolek, clarinet (BM '18, MM '20); Emma Donkin, piano (BM '18)

Saturday, April 17 | 7:00 PM | Premiere

Pre-recorded for viewing on [Cliffe College YouTube](#) and [McDonough YouTube](#) channels.

Dana Faculty Recitals: Allan Mosher, bass; Cicilia Yudha, piano

Performing Franz Schubert's *Winterreise* (D911)

Sunday, April 18 | 7:00 PM | Premiere

Pre-recorded for viewing on [Cliffe College YouTube](#) and [McDonough YouTube](#) channels.

Robyn O'Neill, Department of Art Lecture Series

Monday, April 19 | 1:00 PM

View [here](#).

Robyn O'Neil was born in Omaha, Nebraska in 1977, and currently lives in Washington State. She mainly makes drawings. Her work was included in the 2004 Whitney Biennial. She is the recipient of numerous grants and awards, including a Joan Mitchell Foundation Grant, an Artadia grant, and the Hunting Prize. O'Neil has had several traveling solo museum exhibitions in the United States, and her work is included in over fifty noted museums throughout the world.

Junior Portfolio Review Exhibition

Monday, April 19-23

Judith Rae Solomon Gallery | Bliss Hall

Winnie Soon, Department of Art Lecture Series

Thursday, April 22 | 9:00 AM

View [here](#).

Born and raised in Hong Kong, Winnie Soon is an artist-researcher interested in queering the intersections of technical and artistic practices as a critical/feminist/queer praxis, with works appearing in museums, galleries, festivals, distributed networks, papers and books. Researching in the areas of software studies and computational practices, she/they is currently based in Denmark and working as Associate Professor at Aarhus University.

Spring Graduating BFA Exhibition

Friday, April 23 – May 8

McDonough Museum of Art

An exhibition of work by students graduating in the spring semester from the Department of Art at YSU.

MFA Thesis Exhibition

Friday, April 23 – May 8

McDonough Museum of Art

Featuring works by students graduating with a Master of Fine Arts degree in Interdisciplinary Visual Arts.

University Theatre: *Welcome Spring!*

Friday, April 23 | 7:30 PM | Premiere

This production is free of charge.

Available on the [Cliffe College YouTube](#) channel.

A cabaret style event showcasing students in the Musical Theatre program, this show is all about that 70s feel, offering a groovy evening of out-of-sight music that sparks love, peace, hope and renewal just in time for Earth Day.

McDonough Museum Honors Recital Series: Bin Peng, flute

Saturday, April 24 | 7:00 PM | Premiere

[Pre-recorded for viewing on Cliffe College YouTube and McDonough YouTube channels.](#)

Recitals by standout Dana School of Music students selected by a faculty committee.

Junior Portfolio Review Exhibition

Monday, April 26-30

Judith Rae Solomon Gallery | Bliss Hall

May

Dana Horn Studio: Horns a Springin'

Saturday, May 8 | 2:00 PM | Live

Wick Avenue, M-30 Parking Deck

Dana @ McDonough: World Premieres by Dana School of Music Student Composers

Saturday, May 8 | 7:00 PM | Premiere

[Pre-recorded for viewing on Cliffe College YouTube and McDonough YouTube channels](#)

World premieres by Dana School of Music student composers under the direction of Dr. Dave Morgan.

Department of Art Virtual Information Session: Graphic + Interactive Design

Monday, May 10 | 6:00 PM

Register [here](#).

In addition to these scheduled events, virtual performances by the YSU Wind Ensemble, Dana Symphony Orchestra, Dana Chorale, Voices of YSU, and other Dana ensembles will appear on the Cliffe College YouTube channel throughout the Spring '21 semester. Be sure to like and follow the Dana School of Music and the YSU Cliffe College of Creative Arts Facebook pages for updates.

Cliffe College of CREATIVE ARTS

CONTACT

Website: ysu.edu/academics/cliffe-college-creative-arts
Facebook: facebook.com/ysuccac
Email: CliffeCollege@ysu.edu
Telephone: 330-941-3625

ALUMNI

As Alumni of the **Cliffe College of Creative Arts**, you are invited to all receptions hosted by the college in conjunction with the events listed in this brochure. To learn more about the benefits available to YSU alumni, go to ysu.edu/alumni. Please remember to also email us at CliffeCollege@ysu.edu updates on where you are working, performing, exhibiting, teaching, and any other accomplishments you would like us to share.

PROSPECTIVE STUDENTS

APPLY: Prospective students should apply at [here](#). Some programs require additional audition or application materials for admission.

VISIT: For more information and to schedule a personalized tour, please contact:

Danielle Lorenzi
Coordinator of Admissions and Recruitment
djlorenzi@ysu.edu or call 330-941-2346

PARKING AND DIRECTIONS

Parking is available most conveniently in the Wick Avenue Parking Deck for a \$5 fee payable in cash only. Patrons should park on the third level, then walk behind the McDonough Museum to easily access Bliss Hall.

Bliss Hall's street address for GPS use is Bliss Hall, 547 Wick Ave, Youngstown, OH 44503.

Youngstown State University does not discriminate on the basis of race, color, national origin, sex, sexual orientation, gender identity and/or expression, disability, age, religion or veteran/military status in its programs or activities. Please visit [EIT Home Page](#) for contact information for persons designated to handle questions about this policy.



GIFTS AND ENDOWMENTS

Private philanthropic support continues to be a key component of the Cliffe College's excellence. Both planned and outright gifts support the College's priorities, including student success, faculty endeavors, innovative programs, and a cutting-edge learning environment. We are most appreciative of our benefactors for their exceptional contributions.

THE STONE BRIDGE SOCIETY **\$1,000,000-\$1,999,999**

E. Wayne Cliffe
Roberta Marsteller Hannay Foundation
Dr. John J. McDonough

THE 1908 SOCIETY **\$500,000-\$999,999**

W. E. Bliss Fund

THE TRUSTEES SOCIETY **\$250,000-\$499,999**

Florence Simon Beecher Foundation
Joseph & Rose Dusi
Roger & Gloria Jones
Senator Harry Meshel
Lena M. Ferrara Family

THE PRESIDENT'S COUNCIL **\$100,000-\$249,999**

Lawrence M. & Garnet P. Anderson
Clara P. Hincy
Tony Leonardi Fund
Richard A. Martin/Aurora Ragaini-Martin Funds
Katherine McDowell-Wilson
Martin Solomon
Helen Stambaugh
Robert J. Yalch Trust

ACADEMIC COUNCIL **Endowed Gifts of up to \$100,000**

88 Hearts Fund
ASECU
Michael Abrams/Youngstown Opera Guild
Agler-Rice Family Foundation
Anonymous
Dr. Rebecca Ault
Ronald Barnes and Emily Parker Mackall
Paul F. Beight, Jr. Fund
John Beniston
Martin Berger
Herbert Bias & Janet Hurrelbrink
Colonel Boals
Bill Bodine
William Borts
David Bulkley
Robert E. Bulkley Jr. Fund
Donald "Bill" Byo
Albert Caldroni Fund
Cynthia Carter
Anthony Cebriak
Dr. Albert Cinelli
Josephine Clowes
Dr. Michael and Wendy Crist
Carrol B. Cubbison
Attorney Theodore Cubbison
Frank & Gretchen Dawson
Dr. Peter DeVito
Diana DeVito
Robert Dipiero
Dr. Adam Earnhardt
Dr. Joseph Edwards Fund

Mary El'Hatton
Leonard Fisher
Fitzer Family
Robert E. Fleming
Friends of Music Fund
Friends of Theater Fund
George Gabler
Samuel & Molly Galano
Elaine Glasser
GlaxoSmithKline Foundation
Ron & Marcia Gould
Great River Learning
Deborah Guthrie
Frankie "Mr. Lucky" Halfacre Fund
Mary Carol Hartwig
Chuck Housteau Memorial Fund
Rosemarie Kascher
Beverly McKinstry Kay
Justin Klimko
Thomas N. Klimko
Dr. Kathleen Kougl Estate
James Krivanek
James P. LaLumia Fund
Zara Markman
Drs. George & Margaret McCloud
Paul McFadden
Dr. Walter Matthews
Arthur F. Menaldi
George Meshel
Robert Michael
Peter H. Milliken
Monday Musical Club, Inc.
Steve Mondora

William Mondora
Marietta Morris
Kate Mulgrew
Edward & Christine Muransky
Kenneth Newman
Nellie P. Nick
Dr. Daniel O'Neill
Ann Owen
Donna Pate
Richard Patnode
Penguin Club
Dr. Tedrow & Sue Perkins
Esotto & Vera Pellegrini
Jessica C. Porcase Fund
Tod Porter
Rudy & Wealthie Prince
Mary P. Rigo
Herman C. Ritter
Dan Ryan Fund
Joseph Salvatore
John "Jack" Scott & Julie Smith
Dr. Edward J. & Frances Starinchak
Donald Stimple
Barbara Tinkham
Dr. Robert L. Tornello
Dr. Robert Tornello
President James P. and Mrs. Ellen Tressel
Dr. H. S. and Florence Wang Family Foundation
Marilyn Ward
Dr. Cary Wecht
WYSU-FM
Warren Young



YOUNGSTOWN STATE UNIVERSITY



*Cliffe College of
Creative Arts*

One University Plaza Youngstown, OH 44555

RETURN SERVICE

NON PROFIT ORG
U.S. POSTAGE
PAID
YOUNGSTOWN, OH
PERMIT NO. 264